

# CONSTABLE'S COUNTY



An update on  
policing from  
the East, West  
and South of the  
county.

**APR**  
**2025**



**SUFFOLK**  
CONSTABULARY



**Suffolk Police and  
Crime Commissioner**

*Making Suffolk a safer place to live, work, travel and invest*

# INTRODUCTION

As you may have read in the news recently, the Prime Minister has recently unveiled his plan for change in policing, reiterating that communities can expect to have a more visible and responsive policing presence that will reconnect with the communities they serve. Every neighbourhood will have a named, contactable police officer in their community, dealing with local issues, as the Prime Minister puts more police on the street at the heart of his mission to tackle crime.

The "Neighbourhood Policing Guarantee" sets out what communities should expect from their neighbourhood policing team. To support this, the milestone over this Parliament is to have 13,000 additional neighbourhood policing officers, Police Community Support Officers and Special Constables in dedicated neighbourhood policing roles. These officers must demonstrably spend time on visible patrol and not be taken off the beat to plug shortages elsewhere. The government is boosting the Neighbourhood Policing Guarantee with £100 million to provide visible, accessible officers that will deter offending and reassure locals they will be kept safe.

The Neighbourhood Policing Guarantee is about more than just increasing numbers. It's about rebuilding the vital connection between the public and the police. In Suffolk we are currently planning for this and looking at how we can increase our visibility in communities. I look forward to sharing our plans with you in the near future.

The Constabulary's Digi Desk non-emergency response system celebrated its first anniversary recently. In the past 12 months:

- The team has handled more than 11,000 interactions on the website since April 2024;
- Triaged 90% of all social media within a few minutes;
- Has taken part in more than 15,000 Live Chat interactions, typically answered by a staff member within on average of 11 seconds;
- As of March 2025, 93% of surveyed users would recommend the service to a friend/family or use it again.

The team triages a number of different forms from the force's website, manages emails from partner agencies, and monitors comments

and direct messages on the constabulary's Facebook and X pages. It also responds in real time to Live Chat enquiries every day between 8am and 9.30pm.

I am delighted that a Suffolk police project aimed at preventing crime in the night-time economy (NTE), particularly violence against women, has been highlighted by the College of Policing recently. Police officers and staff in the licensing team worked with venues across the county to achieve a cut in recorded crime (75 fewer crimes in total and a 47% fall in sexual violence). The seven-month project (September 2023 – March 2024) involved expanding the work of licensing officers on Serious Violence Duty (SVD) with the intention of reducing serious violence and sexual violence linked to the licensing and night-time economy industry through engagement with venues, cutting these incidents in public open spaces by pressing community partners to fund environmental design changes and/or street repairs, and engaging with educational establishments.

Officers looked at venues and public spaces that experience repeat offences, and worked with the public, venues and community stakeholders to introduce measures to reduce the likelihood of crime and disorder and promote public safety. In addition, they worked with venues to create vulnerability and welfare strategies, reduce the strength of alcohol on sale from off-licences and cut opportunities for offending.

The project ended in March 2024 but Suffolk Constabulary is looking at alternative funding opportunities to continue this work. The results were positive:

- 75 fewer crimes were recorded and demand was reduced by 38.1%. This is estimated to have saved Suffolk Constabulary around £99,000.
- A 47% reduction in sexual or serious violent offences associated with all venues.
- More than 2,800 people benefitted directly by intervention from club welfare officers, police intervention during patrols.
- Proactive policing operations, including drug sampling as a condition of entry, was particularly favourable with younger female members of the community.



Finally, I am delighted that one of our top police dogs has reached the finals of a national competition. 'Adam' and his skilful handler Police Constable Nick Lofthouse of the Norfolk & Suffolk Dog Unit were top point scorers in the Eastern Region Dog Trials held in Hertfordshire in early April to book a slot in the National Finals in the West Midlands from 7-10 May.



**Chief Constable Rachel Kearton**

The recorded crime data from the Office of National Statistics published recently continues to be very good news for us all in Suffolk. Our county has the third lowest level of crime per person in England and Wales and is a testament to everyone involved in tackling and preventing crime.

That of course does not in any way provide reasons for taking a softer approach. Many of you will know the insidious approach of organised crime groups in some areas and the blight of anti-social behaviour can be problematic. So what is to be done? The approach will not be the same nationwide, or even amongst various Suffolk communities, but it has to be a joint approach across all sectors - private, public and voluntary. We all have an important part to play since policing alone cannot solve these difficulties.

The previous government funded an additional 202 police officers in Suffolk. The current government has stated its intention to recruit a further 13,000 police personnel in the next four years, and in the first tranche will pay for 17 additional Suffolk officers. My frustration is this is based on the totally unfair and discriminatory funding formula. That said, 17 is better than nothing.

There is an initiative now being rolled out across the county called, 'Clear, Hold, Build'. I am excited about this because it links the whole of the community for the greater good. Whilst initially I was sceptical about this being a mandated Home Office requirement, it is one of those rare situations where a good degree of flexibility was permitted - as opposed to having a one size fits all approach which rarely succeeds in my view.

The initial focus of Clear Hold Build is strong police enforcement in a small area where there is evidence of problems such as organised crime activity and intolerable levels of anti-social behaviour. The 'hold' stage is to maintain the significant reduction in crime using various tactics such as greater visibility and surveillance – all of this supported by the affected community following extensive consultation and engagement, before embarking on the 'Build' initiatives.

Very often the areas selected for Clear Hold Build suffer high levels of deprivation and low educational achievement. However, Clear Hold Build has the potential to turn matters around and this is where, as Police and Crime Commissioner I can and will help through our grants and commissioning work.

A Clear Hold Build has been introduced in Felixstowe and Newmarket, and one is scheduled for Ipswich. During the next few years there will be more areas included and I am confident this will help make the county even safer and prosperous. Suffolk can be optimistic about its future.

**Police and Crime Commissioner Tim Passmore**



## OUR MISSION KEEPING SUFFOLK SAFE

We are courageous | professional | community | compassionate





**Inspector**  
**Liz Casey**

Inspector Liz Casey is responsible for the Community Policing Team (CPT) which covers Halesworth, Southwold, Debenham Eye, Framlingham Yoxford, Leiston Saxmundham and Aldeburgh.

## SOCIAL MEDIA

**Twitter -**  
**@HaleswrthPolice**

**Facebook -**  
**/HalesworthPolice**

## HALESWORTH

We have had several days of actions within the community, these days of action have been in most recently in Halesworth and Southwold and also Saxmundham.

These days of action are with statutory partners including the immigration service, Suffolk Fire and Rescue Service and East Suffolk Council include their licencing, waste and building controls departments, as well as private sector housing and food safety. These days highlight the importance of partnership working for the community. Visibility and engagement is key to the role of Suffolk police and we will continue to have these days throughout the year supporting our towns.

The Community Policing Team (CPT) have been out engaging with local parishes encouraging Community Speed Watch, setting up new locations. If you are interested in being part of Speed Watch, or wish to see if one can be set up in your town or village, please contact: Christian.Hassler@suffolk.police.uk.

Officers have been completing daytime enforcement across the towns, working with our safety camera team, resulting in drivers being appropriately dealt with for multiple offences.

Our Response Investigation Team (RIT) colleagues continue to patrol the roads during the night preventing and targeting offenders on the road – all of these images highlight offences including persons arrested for drink driving, drug driving and no insurance, resulting in the vehicles being taken off the road.

We have increased patrols overnight targeting rural crime. This continues to be a priority for the locality and your CPT team continues to engage with the rural community and business to ensure appropriate support and crime prevention advice is provided, we are supported by our response officers and

colleagues in the Rural Crime Team, Roads policing and the dog unit, which patrols the locality during the evening and overnight to prevent and target criminals committing offences with our towns and parishes.

We have carried out increased patrols in many of the towns and parishes to include Saxmundham, Framlingham, Southwold, Reydon, Halesworth, Eye and Leiston to increase reassurance to the community and deal with any instances of anti-social behaviour (ASB).

Police have executed many warrants and there is ongoing proactive policing by uniformed and plain clothes offices to target criminals possessing and dealing drugs within our communities. Police rely on the community telling us what is going on, please tell us via: [intelligencereporting@suffolk.police.uk](mailto:intelligencereporting@suffolk.police.uk) or by calling Crimestoppers on 0800 555 111.

### Our future engagements:

#### Halesworth:

Halesworth, Market Place - 7 May – 10am-11am.  
Southwold, Market Place – 12 May – 9.30am-10.30am  
Halesworth, Market place – 14 May – 10am-11am  
Southwold, Market Place – 19 May – 9.30am-10.30am  
Halesworth, Market place - 21 May – 10am-11am  
Halesworth, Market Place - 28 May – 10am-11am

#### Debenham and Eye:

Kenton Church 1 May – 10am-12pm  
Stradbroke Friendship Club – 1 May – 2pm-4pm  
Eye Library Drop – 6 May – 10am-12pm  
Redlingfield Coffee Morning – 7 May 10am-12pm  
Horham Baptist Church – 12 May – 10am-12pm

## CONTACT US

Need to contact police and it's not an emergency? Save time, do it online - [suffolk.police.uk/contact-us](https://suffolk.police.uk/contact-us)

You can call 101 to report a crime that has already happened, seek crime prevention advice or make us aware of any policing issues in your area.

You should always call 999 if:

- you or someone else is in immediate danger
- if the crime is in progress
- you need police help immediately

Debenham Leisure Centre - 17 May – 10am-12pm  
Wingfield, Rural Coffee Van, 20 May – 10am-12pm

#### Framlingham and Yoxford:

Framlingham Library 8 May – 10am-12pm  
Great Glemham coffee afternoon – 13 May – 2pm-3pm  
Walpole / Cookley Coffee morning – Walpose Village Hall – 27 May – 10am-12pm  
Sweffling Coffee morning – Village Hall – 28 May – 10am-12pm

#### Leiston, Saxmundham and Aldeburgh:

Saxmundham - Christies Care Rose House - 7 May – 1pm-3pm  
Aldeburgh Library drop in - 21 May – 10am-12pm  
Saxmundham Library - 27 May – 10.30am-12pm

## YOU SAID... WE DID

**You said** - Wanted more visibility and engagement:

**We did** - We have had several days of actions within the community, these days of action have been most recently in Halesworth and Southwold and also Saxmundham.

**You said** - Wanted more patrols tackling driving offences

**We did** - The Community Policing Team (CPT) have been out engaging with local parishes encouraging Community Speed Watch, setting up new locations.

**You said** - Concerns around overnight crime

**We did** - Increased patrols overnight targeting rural crime

**You said** - Concerns around ASB and drugs in the community

**We did** - We have carried out increased patrols in many of the towns and parishes to include Saxmundham, Framlingham, Southwold, Reydon, Halesworth, Eye and Leiston to increase reassurance to the community and deal with any instances of anti-social behaviour (ASB).

## LOCAL PRIORITIES

- Speed reduction and motoring offences within the community
- To provide a visible policing presence within our residential and business and communities to target overnight offences
- Tackling ASB and drugs within the community.



**Inspector**  
**Mark Jackson**

Inspector Mark Jackson is responsible for the Community Policing Team (CPT) which covers Beccles and Worlingham, Bungay and Wainford, Carlton Colville and Kessingland, Gunton, Oulton and Lothingland, Harbour, Kirkley, Normanston, Pakefield and Whitton and St. Margarets.

## SOCIAL MEDIA

**Twitter -**  
**@LowestoftPolice**

**Facebook -**  
**/LowestoftPolice**

## LOWESTOFT

Whilst we enter May, the weather appears to be getting warmer and the nights getting longer, but the aim of the Community Policing teams remain the same: being visible within our communities and helping to keep people safe.

The team has been very busy reacting to what our communities have been telling us, whilst working with our partner agencies to try and prevent future problems.

In February and March, police received a large number of calls regarding youths causing issues in and around the area of Lowestoft town centre and the North Quay Retail Park. Police conducted police patrols, liaised with local businesses and dealt with those responsible for the disorder. These patrols will continue during the months of May and June.

The team has also been busy tackling issues in various other areas of Lowestoft, Beccles and Bungay.

Patrols have been conducted in Gunton and Corton following concerns of inappropriate behaviour. Patrols have taken place around Fen Park following previous reports of anti-social behaviour (ASB), disorder and criminal damage. Patrols have taken place in our town centres to help tackle retail related crime whilst our team have also walked around our business and residential areas late in the evening to help prevent burglaries and theft offences.

Following reports of thefts from garages, sheds and vehicles, various arrests have been made. Those offenders have been released on bail while enquiries continue.



The team has also been very active in our local schools, supporting the teaching staff

and providing children with educational inputs. This is to help raise awareness around important issues such as online safety, anti-social behaviour, drugs and other themes.

The team has also held various street meets, where members of the team have been present at pre-planned and advertised locations so that they are on hand to answer any questions, listen to any concerns and offer support to anyone who approaches them.

Pictured below are two newer members of the team, PC Evans and PC Cooper at the street meet at Lowestoft Train Station.



Sgt Coote recently organised for the East Anglian Air Ambulance to visit Lowestoft Police Station and provide a training evening for our Lowestoft Police Cadets. Our cadets provide valuable support at our community events.

If you would like to apply and become a cadet, please visit our website for more details or apply by sending us your details via [lowestoftcadets@suffolk.police.uk](mailto:lowestoftcadets@suffolk.police.uk)

## CONTACT US

Need to contact police and it's not an emergency? Save time, do it online - [suffolk.police.uk/contact-us](https://suffolk.police.uk/contact-us)

You can call 101 to report a crime that has already happened, seek crime prevention advice or make us aware of any policing issues in your area.

You should always call 999 if:

- you or someone else is in immediate danger
- if the crime is in progress
- you need police help immediately

### Upcoming Engagements:

We regularly upload street meet dates onto our Facebook page.

#### THURSDAY 8 MAY -

- Asda, Horn Hill - 11am-12pm
- Coffee Rush, Dip Farm - 11.30am-12.30am

#### SATURDAY 10 MAY -

- Waterlane Leisure Centre - 10am-11am
- Sparrows Nest - 2pm-2pm

#### SUNDAY 11 MAY -

- Westwood Avenue Shops - 9.30am-10.30am
- Carlton Marshes - 11am-12pm

#### TUESDAY 13 MAY -

- Coop, London Road South - 4pm-5pm

#### SATURDAY 17 MAY -

- Buttercross, Bungay - 10am-11am
- Tesco, Beccles - 1pm-2pm

#### TUESDAY 20 MAY -

- Coop Swines Green, Beccles - 5-6pm

#### WEDNESDAY 21 MAY -

- Bungay Community Centre - 5pm-6pm

#### THURSDAY 22 MAY -

- Morrisons, North Quay - 6pm-7pm

#### TUESDAY 27 MAY -

- Yorkshire Building Society, London Road North - 11am-1pm

#### WEDNESDAY 28 MAY -

- Marram Green Kessingland - 10am-11am

#### THURSDAY 29 MAY -

- Coop, Ashburnham Way - 10am-11am

## YOU SAID... WE DID

**You said:** Reports of indecent behaviour around the areas of Gunton and Corton.

**We did:** Police have conducted patrols and are working with partner agencies to help prevent future offending.

**You said:** Reports of youth related disorder in Lowestoft town centre and the North Quay Retail Park.

**We did:** Patrols have been conducted. Police have liaised with local businesses and identified various individuals involved. Positive action has and will continue be taken.

**You said:** Reports of overnight crime involving theft from garages, sheds and vehicles have been reported across various wards of Lowestoft.

**We did:** Police have conducted many overnight patrols focusing mainly on areas where reported crime has taken place. Various arrests have been made and these offenders remain on bail whilst enquiries continue to be made.

## LOCAL PRIORITIES

- To tackle the issue of retail theft within our town centres and retail parks and to work with partner organisations to reduce the risk of re-offending. (This priority remains unchanged).
- To tackle the issue of ASB that has been reported in the North Quay retail park and Station Square area of Lowestoft.
- To target those that supply drugs and exploit others for financial gain.





**Inspector**  
**Ben Hollands**

Inspector Ben Hollands is responsible for the Community Policing Team (CPT) which covers Great Cornard, Haverhill Rural and Suffolk South West, Haverhill Town, Sudbury Rural North, Sudbury Town, Waldingfield, Boxford and Bures.

## SOCIAL MEDIA

**Twitter -**  
**@PoliceHaverhill**

**@PoliceSudbury**

**Facebook -**  
**/SudburyHaverhillPolice**

## SUDBURY & HAVERHILL

In Sudbury and Haverhill, anti-social behaviour (ASB) remains a priority around our town centres and public open spaces, with a continued police presence.



Sudbury Community Policing Team (CPT) had reports of ASB in the Croft area of Sudbury where stones were being thrown at wildlife.

The persons responsible were identified and spoken to both by local CPT officers and our rural and wildlife crime team. The roads police team having been assisting Sudbury community policing team to tackle ASB with a day of action, which resulted lots of positive engagement along with dealing with five noisy or defective exhausts and one defective rear light on vehicles.



Sudbury CPT have conducted a joint immigration and modern-day slavery

operation in partnership with the Border Force. During the operations, several businesses were visited, safeguarding victims and prosecuting offenders.

Meanwhile Haverhill CPT held an engagement event at Kedington Easter Egg Hunt on Saturday 19 April which was popular, and not just for the chocolate.

Sudbury CPT have held engagements events on Sudbury market and attended a careers fair at Thomas Gainsborough School looking for the cops of the future.

Both Haverhill and Sudbury CPT have been continuing their work with young people. We have been in our local schools delivering educational, crime prevention presentations speaking about online grooming and road safety.



There are more engagement events planned such as a street meet at the Cavendish Community Fair on 31 May 5-6 pm and Lavenham Farmers Market on the fourth Sunday of each month, so come and say hello to your local police team.

## CONTACT US

Need to contact police and it's not an emergency? Save time, do it online - [suffolk.police.uk/contact-us](https://suffolk.police.uk/contact-us)

You can call 101 to report a crime that has already happened, seek crime prevention advice or make us aware of any policing issues in your area.

You should always call 999 if:

- you or someone else is in immediate danger
- if the crime is in progress
- you need police help immediately

### Upcoming Engagements:

2 May - St Andrew's Church Coffee Morning, Gt Cornard

7 May - Little Cornard Coffee Market

10 May - Little Cornard Flower festival

12 May - Stevenson Centre Pop up engagement

14 May - Long Melford Pop up event Co-Op, High Street, Long Melford – With Cllr Nunn

20 May - Street Meet People Park Way

20 May - Street Meet Minden Road

25 May - Hedgerows Estate street meet

14 May - Long Melford Pop up event Co-Op, High Street, Long Melford – With Cllr Nunn

## YOU SAID... WE DID

**You said:** The anti-social use of vehicles in Sudbury.

**We did:** The Roads Policing team had a day of action in Sudbury targeting drivers and providing education. Local intelligence targeting hotspots areas. Working in partnership with local council to make public areas feel safer and reduce the opportunity for ASB.

**You said:** ASB within Sudbury town centre.

**We did:** Increase in officers on foot patrol in and around the town centre targeting hotspot area and key individuals. Targeted visible policing during a weekend evening, targeting the nighttime economy. Education and engagement with some young people who were responsible for ASB.

**You said:** ASB in a residential area of Haverhill.

**We did:** Increased the number of police patrols. Local ASB survey. Intelligence building.

**You said:** Drug dealing in Haverhill.

**We did:** Targeted intelligence lead stop searches of key suspects. Seized illegal vehicles. Proactive drugs warrants on premises with drug, cash and evidence being seized.

## LOCAL PRIORITIES

- Drug dealing and County Lines
- Rural burglaries and inquisitive crime
- ASB within our town centres and residential areas



**Inspector**  
**Andrew Beeby**

Inspector Andrew Beeby is responsible for the Community Policing Team (CPT) which covers Bury St Edmunds, Bury Rural North and Bury Rural South.

## SOCIAL MEDIA

**Twitter -**  
**@BuryStEdsPolice**

**Facebook -**  
**/BuryStEdmundsPolice**

## BURY ST EDMUNDS

During this reporting period the CPT Team have been really busy, undertaking a mixture of engagement and proactive activities, as well as remaining visible in the villages and town centre.



28 April – Barningham  
26-27 April – Game and Country Fair, Euston  
25 April – Eastgate Street, Bury St Edmunds  
16 April – Fraud Awareness – Barclays  
14 April – West Stow  
1 April – Catch 22, short Brackland



In addition to these public engagements, the CPT Team have undertaken several joint housing visits supporting officers from the various housing associations within the town.

The Community Policing Team (CPT) team have also executed search warrants

in respect of controlled drugs, recovering Class A and B drugs as well as cash and weapons.

A Criminal Behaviour Order (CBO) has been granted following application by the CPT banning a prolific shop lifter from several stores in the town centre.

**Upcoming events:**  
Bury town centre pop up event - 28 May

## CONTACT US

Need to contact police and it's not an emergency? Save time, do it online - [suffolk.police.uk/contact-us](https://suffolk.police.uk/contact-us)

You can call 101 to report a crime that has already happened, seek crime prevention advice or make us aware of any policing issues in your area.

You should always call 999 if:

- you or someone else is in immediate danger
- if the crime is in progress
- you need police help immediately

## YOU SAID... WE DID

**You said** – Town Centre ASB related to street drinking is an issue.

**We did** - Five civil ASB injunctions were granted on Friday 25 April against some of the most prolific street drinkers, giving police extra powers to deal with their behaviour and association in groups within the town centre.

There is also a huge amount of partnership work being undertaken with the local authority, health, charities and local businesses, working towards sustainable solutions.

**You Said** – Drug dealing in Rural Villages

**We Did** – Executed search warrants in 2 rural villages, seizing large quantities of Cannabis as well as Class A drugs, Cash and Weapons.

## LOCAL PRIORITIES

- Dealing robustly with retail crime
- Deal with anti-social behaviour
- Drug Dealing and County Lines





**Inspector**  
**Tim Scott**

Inspector Tim Scott is responsible for the Community Policing Team (CPT) which covers Brandon, Lakenheath and the Rows, Manor and Red Lodge, Mildenhall and Newmarket.

## SOCIAL MEDIA

**Twitter -**  
**@ForestHthPolice**

**Facebook -**  
**/ForestHeathPolice**

## FOREST HEATH

The slightly warmer weather has seen things starting to get busier again in Forest Heath.

In Newmarket, led by Sgt Chris Button, officers from the Community Policing Team (CPT) and Dog Unit deployed on a licensing operation focussing on public houses in the town. Officers checked the premises compliance with licensing legislation and searched a total of five people for drugs.

In Mildenhall, PC Sam Hunt who is one of our probationary constables and on an attachment with the Community Policing Team, conducted one of our regular engagements at Sainsburys.



And PC Olly Smith, in partnership with the United States Air Force Security Forces, conducted our first on base pop up engagement at the shopping precinct on RAF Lakenheath Airbase to build relationships with our large American military community. This was a real success.

Officers also undertook a high visibility operation in Mildenhall town centre as part of Project Servator. These deployments seek to disrupt a range of criminal activities including shoplifting and drug dealing as well as engaging with the local community.

Following the tragic death of a 71-year old man in Newmarket High Street following

an incident on Saturday 8 March and subsequent murder charge, officers also conducted reassurance patrols.



Finally, we continue our engagement with local schools visiting many schools recently from pre-school age right through to secondary schools. Here are some photos from Stepping Stones Pre-School, Breckland secondary, Paddocks Primary, Fairstead House and Lakenheath Primary.



## CONTACT US

Need to contact police and it's not an emergency? Save time, do it online - [suffolk.police.uk/contact-us](https://suffolk.police.uk/contact-us)

You can call 101 to report a crime that has already happened, seek crime prevention advice or make us aware of any policing issues in your area.

You should always call 999 if:

- you or someone else is in immediate danger
- if the crime is in progress
- you need police help immediately

### Upcoming engagements:

Every Tuesday 10am – 12pm – Guineas Shopping Centre, Newmarket

15 May 10am – 12pm – Sainsbury's Mildenhall Meet & Greet

17 May 10am-12pm – Tesco Brandon Meet & Greet

20 May 2pm – 3.30pm – Personal Safety Presentation Brandon Bowls Centre (Ladies Club)

## YOU SAID... WE DID

**You said** – Concerns raised about Youth related ASB in the evenings in Brandon

**We did** – Prevention Activity Log initiative, additional patrols conducted, Working together with Schools and Parents to prevent those children potentially responsible from engaging in ASB.

**You said** – Drug use in pubs in Newmarket is an issue

**We did** – Licensing Operation conducted which saw several public houses visited with sniffer dog. Five persons stop and searched. Positive engagement with Landlords.

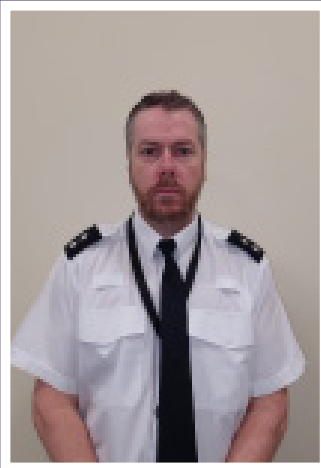
**You said** – Reports of drug dealing in Red Lodge

**We did** – Search warrant executed. cocaine and cash found. One male arrested. Investigation ongoing.

## LOCAL PRIORITIES

- Target those supplying drugs in our communities.
- Focus on reducing acquisitive theft offences such as burglaries, theft from motor vehicles and theft of motor vehicles by catching those responsible.
- Tackling & reducing incidents of anti-social behaviour.





**Inspector**  
**John Murray**

Inspector John Murray is responsible for the Community Policing Team (CPT) which covers Stowmarket, Mid-Suffolk North/East and Mid-Suffolk South/West.

## SOCIAL MEDIA

**Twitter -**  
**@PoliceStow**

**Facebook -**  
**/StowmarketPolice**

## STOWMARKET

As we enter springtime, with the weather improving and lighter evenings, the Stowmarket Community Policing Team (CPT) have been busy continuing to support our partners including local high schools to deal with an increase in anti-social behaviour (ASB) in Stowmarket town centre. This has included issuing anti-social behaviour warning letters to individuals causing reports of ASB in Fox Court, Stowmarket, high visibility patrols and conducting educational inputs.

We mentioned in the last article about a rise in ASB in the Rickinghall/Bottesdale area.



As a result of working with the local youth club, completing high visibility patrols and a pop-up event, meet and greet with the local community police officer we have seen a significant decrease in reports of ASB in the area. We will continue to patrol these areas to prevent any further issues of ASB in the area.

In the Rickinghall area targeted patrols have taken place at key locations and times after requests from residents. These will continue to happen over the coming weeks.

We have continued to provide crime reduction advice and smart water packs for victims of burglaries to utilise. As a result of proactive work carried out by the Criminal Investigation Department (CID), Response Investigation Department (RIT), CPT and proactive teams an arrest has been made in relation to dwelling burglaries. Following this arrest, as well as targeted patrols at key times and locations and crime reduction advice, I am pleased to say that there has been a significant reduction of this crime type.

A number of school visits have been carried out and educational inputs have been conducted around ASB, bullying and violence. We continue to engage with schools within the locality, attending and providing presentations to educate our youth on current topics that may impact on them.



The cadets have been busy assisting officers completing a street-a-week survey in the local area where properties had been targeted for dwelling burglaries. They have also enjoyed an input around a new initiative involving the use of virtual reality headsets covering topics of gangs and knife crime.



Please see the Suffolk Police Website and social media to keep up to date on our priorities and events in your area that we will be attending - <https://www.suffolk.police.uk>.

## CONTACT US

Need to contact police and it's not an emergency? Save time, do it online - [suffolk.police.uk/contact-us](https://suffolk.police.uk/contact-us)

You can call 101 to report a crime that has already happened, seek crime prevention advice or make us aware of any policing issues in your area.

You should always call 999 if:

- you or someone else is in immediate danger
- if the crime is in progress
- you need police help immediately

### Upcoming engagements:

Sunday 4 May – 10am–4pm – Stonham Barns – Motorcycle show, Police engagement with PC Ferguson, PCSO Harvey and Police Cadets

Wednesday 7 May – 9am–10am – Mendlesham Primary School – Policing and Stay safe input with PCSO Harvey

Wednesday 14 May – 11am-12.30pm – Thurston New Green Centre – Meet and Greet with PCSO Brown

Wednesday 21 May – 11am-12.30pm – Thurston New Green Centre – Meet and Greet with PCSO Brown

Wednesday 28 May – 11am-12.30pm – Thurston New Green Centre – Meet and Greet with PCSO Brown

## YOU SAID... WE DID

**You said** - Residents raised concerns of increased ASB in the location of Fox Court, Stowmarket and surrounding roads.

**We did** – Increased patrols in the area, collaborative work with local high schools to provide educational assemblies and identify offenders. Work with youth justice, schools and offenders' parents to educate around their behaviours and the affect this has on residents in the locality.

**You said** – concerns raised over residential burglaries

**We did** – Carried out pro-active patrols, visited victims of burglaries and other vulnerable premises, providing them with Smart Water products, crime prevention advice and reassurance. Working with other departments within Suffolk Constabulary an offender for recent dwelling burglaries has been arrested.

**You said** – Concerns raise over a suspicious male in rural areas of Rickinghall.

**We did** - Increased patrols in the area, collaborative work with partner agencies providing crime prevention advice and reassurance.

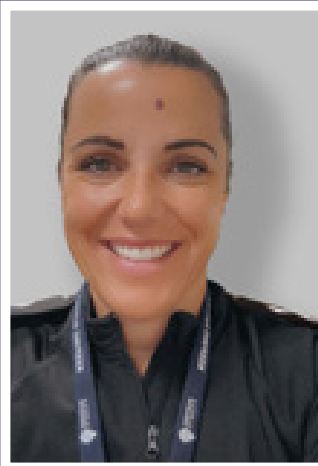
**You said** – Concerns raised over vehicles contravening a no entry sign and speeding on Kiln Lane, Stowlangtoft.

**We did** – Increased patrols in the area dealing with any drivers seen to contravene the no entry sign. The road works have now been completed and all roads have been returned to normal.

## LOCAL PRIORITIES

- Working with our partner agencies to reduce anti-social behaviour in Fox Court, Stowmarket and protecting vulnerable people.
- Proactive patrols being carried out following recent overnight burglaries to commercial premises.
- Proactive patrols being carried out following recent burglaries to residential dwellings.
- Proactive patrols being carried out in the Rickinghall area following concerns from residents in remote areas.
- Working with our partners to address issues caused by vehicles speeding and contravening traffic regulations in the village of Stowlangtoft.





**Inspector**  
**Jess Lawlor**

Inspector Jess Lawlor is responsible for the Community Policing Team (CPT) which covers Alexandra and Westgate and St Margaret's.

## SOCIAL MEDIA

**Twitter -**  
**@IpswichPolice**

**Facebook -**  
**/IpswichPolice**

## IPSWICH CENTRAL

Once again it has been a busy few months in Ipswich Central. Some highlights have been picked out below



Op Proxy (Street Drinking and ASB) week of Action: Over five days high visibility patrols were conducted in the town centre involving the Kestrel and Community Policing Teams. In total 36 alcohol containers were seized, two stop searches carried out, five arrests (drunk & disorderly, possession of Class A drugs & prison recall, theft from shop/prison recall, arson, possession with intent to supply Class B drugs). There were 20+ Intelligence reports submitted. A monthly meeting was also organised to discuss the 10 most prolific offenders to ensure ongoing support is offered for housing, addiction and mental health support.

Holi Festival: On April 6, 2025, PC Butler and PC Milne from the Ipswich Central Community Policing Team (CPT) attended the vibrant Holi Festival at Alexandra Park, Ipswich. The festival, organized by the Ipswich & Suffolk Indian Association, celebrated the Hindu festival of colours with a lively display of music, dancing, traditional Indian cuisine, and the iconic throwing of coloured powder.

PC Butler and PC Milne actively engaged with festival-goers, ensuring a safe and enjoyable environment for all attendees. They interacted with the community, answering questions and providing information about local policing efforts. Their presence helped foster a sense of security and community spirit, contributing to the overall success of the event.

The officers' participation in the Holi Festival highlighted the importance of community engagement and the positive impact of police involvement in cultural celebrations. Their efforts were well-received, and they played a crucial role in maintaining a festive and harmonious atmosphere throughout the day.

Police engagement at Burlington Church - Community Cycling for Health Event - 22 March: On 22 March a multi-agency event was held at Burlington Church, focusing on cycling safety and the health benefits of cycling. The event was free

for the community and featured refreshments, children's activities, health information, and bike repair services.

PCSO Hempstead from the Ipswich Central CPT actively participated in the event, offering free bike marking on-site and distributing kits to help people protect their bikes. Additionally, PC 1716 handed out security information and reporting details, while engaging with the local community and participating in various activities.

The event was a great success, promoting cycling safety and health, and fostering positive interactions between the police and community members.

Job fair at Ipswich School: On the 20th of March 2025, PC Matt Dilks and the Ipswich Central Community Policing Team (CPT) participated in the career's convention held at Ipswich School. The event was a resounding success, with a significant turnout of students and their parents eager to explore career opportunities in the police force.

PC Matt Dilks and his colleagues set up an informative stand, where they engaged with dozens of attendees. They provided valuable insights into the requirements and expectations of a career in policing. Recruitment leaflets were distributed, offering detailed information on the application process, necessary qualifications, and the various roles available within the police force.

The officers were enthusiastic in answering questions and offering guidance, helping to demystify the path to becoming a police officer. The positive interaction left many students and parents feeling inspired and well-informed about the possibilities of a career in law enforcement.

Overall, the engagement at Ipswich School was a fruitful experience, fostering interest and providing clarity for those considering a future in policing.

Crown Pools: On Saturday, April 12, 2025, PC 1716 from the Ipswich Central CPT conducted a community engagement event at Crown Pools. The event was highly successful, with over 100 people, including children, parents, and carers, participating.

PC 1716 engaged with attendees, discussing local concerns, and providing valuable information. Leaflets and merchandise were distributed, helping to raise awareness about community safety and policing efforts. The engagement was very positive, fostering a strong sense of community and trust between the police and local residents and users of the facilities.

## CONTACT US

Need to contact police and it's not an emergency? Save time, do it online - [suffolk.police.uk/contact-us](https://suffolk.police.uk/contact-us)

You can call 101 to report a crime that has already happened, seek crime prevention advice or make us aware of any policing issues in your area.

You should always call 999 if:

- you or someone else is in immediate danger
- if the crime is in progress
- you need police help immediately

### Upcoming events:

1 May – 9am-10.30am - Bramford Road Methodist Church

1 May – 2.30pm-3.30pm - St Helen's Church Top-Up Shop

8 May – 4.30pm-7pm - Maple Park Sports Project

31 May – 12pm-2pm - Wolsey Theatre Big Afternoon Event

2 June – 1pm-3pm - St Margaret's ASB Input for Year 5.

3 June – 1pm-3pm - St Margaret's ASB Input for Year 6.

16 June – 10.30am-12.30pm - Ipswich Library Oddfellows Group

19 June – 4.30-7pm - Maple Park Sports Project

29 May – 10am-12pm - Historical Re-enactors procession and demonstration.

## YOU SAID... WE DID

**You said:** Concerns raised regarding e-bikes being used in the town centre in pedestrian area.

**We did:** Engagement/education period to start at end of April. Enforcement will then follow middle of May to target offenders.

**You said:** Accessibility to police for those unable to attend engagements.

**We did:** Webinars are being organised for dates throughout the year whereby the community can speak with an Insp, Sgt and PC for the South Suffolk areas to answer questions, engage in discussions and listen to any issues being experienced.

## LOCAL PRIORITIES

**Target the most prolific offenders, including those committing ASB and theft from shop offences in the town centre, using preventative orders.**

By use of orders such as CPN/CBO, hot spot and targeted patrols, working with partners and local businesses to tackle offending.

**To ensure the safety of those using the town centre, including residents, shoppers and those using the night time economy.**

Increased visibility, relevant licensing checks and hot spot patrols. Work with our partners, local communities, business premises and design out crime officers.

**To work in partnership with other agencies to reduce ASB in identified residential properties relating to vulnerable persons.**

High visibility patrols and continued address visits. Work with our partners, local communities and design out crime officers.





**Inspector**  
**Naomi Lofthouse**

Inspector Naomi Lofthouse is responsible for the Community Policing Team (CPT) which covers Bridge, Gipping, Hadleigh and Nayland, Stoke Park and Sprites, Whitehouse, Whitton and Castle Hill and Claydon, Copdock and Peninsula.

## SOCIAL MEDIA

**Twitter -**  
**@IpswichPolice**

**Facebook -**  
**/IpswichPoliceUK**

## IPSWICH WEST

This period the Ipswich West and Hadleigh CPT team have been focusing on issues relating to anti-social behaviour (ASB). Due to the warmer weather and lighter evenings, we are very aware of the likely increase in ASB and are working to try and maintain control of such behaviours. We have been working closely with schools to help identify and educate those who may be involved or vulnerable to becoming involved, as well as targeting areas with visible patrols, identified as being previous hot spot as well as covering possible emerging hot spot locations with a view to preventing them becoming problem areas



We have also been continuing to carry out a number of our pop-up events around vehicle crime. We continue to raise awareness and pass on basic crime prevention advice. Offences continue but have decreased compared to recent months, with the arrest of a number of key individuals. Events have been held outside the Fircroft Road shops, outside the Kingfisher Pub in Ipswich and Bramford Co-op.

Assistant Chief Constable Bridger also attended our event with PC Fisk at Fircroft Road shops along with local councillors.

The team have been doing more joint agency events and have done a pop-up event at Anglia Retail Park with Ipswich Borough Council's ASB officer Justin Berry. This helped with our continued engagement with the local businesses around ASB and burglaries that have taken place.

PC Hallatt and PC Baldry attended training in Ipswich held at IP city to give a talk and have a stall showcasing different opportunities within the policing world including the

importance of volunteer roles, showing the various roles that make up the team.

PCSO Manning and PC Hallatt attended the Polish school in Ipswich to revisit and show the children the police vehicle as well as judge the best design for a police vehicle. The team have also attended some Easter fairs as an opportunity to be able to engage with a larger volume of people in one space, being as visible as possible for public to speak to.



In our rural areas PC Jarrett and PC Johnson have continued holding police surgeries at various rural towns and villages including attending local parish council meetings. Areas covered this period have been Brantham, Stoke by Nayland and Bramford. We have also seen the increase in our derelict buildings being entered, which is causing concern for safety as well as further criminal damage and anti-social behaviour (ASB). We are currently working alongside landowners, district and county councils, the police design out crime team and the fire service to try and problem solve these issues. Most recent is the old Fisons Factory and surrounding buildings along Papermill Lane in Bramford, which is presenting a huge safety risk for those deciding to trespass on this site.

There are some key engagements which as a team we look forward to attending and being part of including the Hadleigh Show. Let's hope we have a good summer of sunshine.

## CONTACT US

Need to contact police and it's not an emergency? Save time, do it online - [suffolk.police.uk/contact-us](https://suffolk.police.uk/contact-us)

You can call 101 to report a crime that has already happened, seek crime prevention advice or make us aware of any policing issues in your area.

You should always call 999 if:

- you or someone else is in immediate danger
- if the crime is in progress
- you need police help immediately

### Upcoming events:

Hadleigh Show 17 May

Suffolk Show 28-29 May

Community day at Hawthorn Drive shops - 8 May 10am-1pm

Community day at Downside Close - 27 May - 10am-1pm

Pop up event Chantry Library - 13 June - 10am-1pm

Pop up event Castle Hill Community Centre - 22 May - 9am-11am

Pop event Flatford Mill - 3 May - 11am-1pm

Pop up event St Thomas Opostle Church - 9 May - 12pm-1pm

Pop up event Stoke library - 11 May - 11.15am-12.15pm

## YOU SAID... WE DID

**You said** - ASB with dirt bikes, under-age drinking and drugs around Toppesfield Gardens in Hadleigh.

**We did** - Extra patrols in the area. Intervention already happening with the motorbike users to stop the ASB issues and any motor offences being dealt with.

**You said** - ASB with children around Bridge Ward near the Felaw street and Austin Street areas.

**We did** - Extra patrols, currently working alongside other agency's such as Ipswich Borough Council and also other organisations to see if can bring extra activities to the area such as football or community groups to help engage with the children and provide activities.

**You said** - arson/ASB and trespassing in the abandoned buildings - Fisons Factory (Bramford) and Wherstead Road.

**We did** - using intelligence to help identify those involved. Working alongside the fire service to design a prevention programme to use with school age children. Joint agency work to try and help secure premises and come up with other options to minimise the risk presented

**You said** - ASB on Anglia Retail Park with children causing issues to members of the public and businesses.

**We did** - ASB stage 1 warning notices issued to children. Extra patrols in the area including section 35 dispersal orders issued.

## LOCAL PRIORITIES

- Protection of persons vulnerable to exploitation/ victim of violent crime related behaviours - Working with partners, and making use of police powers to protect those identified as vulnerable/ victims to violence
- Rural burglaries to residential outbuildings - Working to identify and pursue offenders. Using visible and proactive policing amongst our rural communities to deter offences from taking place and offering crime prevention to vulnerable locations and premises
- Vehicle and street related ASB: We are working with partner agencies and making use of police powers in order to protect the community against the effects of anti-social behaviours both from vehicles and on the street.





**Inspector**  
**Ben Richards**

Inspector Ben Richards is responsible for the Community Policing Team (CPT) which covers Deben and Orford, Felixstowe, Gainsborough and Holywells, Kesgrave and Bixley, Martlesham and Orwell, Priory Heath, Rushmere and St. Johns and Woodbridge and Wickham Market.

## SOCIAL MEDIA

**Twitter -**  
**@IpswichPolice**

**Facebook -**  
**/IpswichPolice**

## IPSWICH EAST, WOODBRIDGE & FELIXSTOWE

Since the publishing of the last article the better weather has seen a slight increase in demand across our sector. Clear, Hold, Build within Felixstowe continues with the project groups still striving to deliver improvements in the area. One area that continues to grow under the project is criminal exploitation training for partner organisations and the active bystander training. The South East Community Policing Team (CPT) recently had a good result by securing a restraining order against an individual who was causing issues within Woodbridge, preventing them from entering certain parts of the town.



The team have been increasing their inputs to schools recognising the importance of engagement with pupils. These have been well received by schools and the officers have enjoyed doing the inputs.

Looking ahead, with the better weather around the corner the team are starting to prepare for an increase in anti-social behaviour (ASB). This is a seasonal issue which the officers are getting ahead of. In preparation for this the team have revised their hotspot patrol areas to reduce ASB within the south-east (SE). We continue to prepare engagements

within the community and have some key ones including The Suffolk Show, where officers from the SE CPT will be present every day.



We have some changes in team members coming up, who we will introduce at the next input, they are all looking forward to starting.



We will continue to target acquisitive crime offenders and prioritise prevention advice to enable the public to protect themselves from crime of all types. See below link to the crime prevention area on the website which provides excellent guidance in this area.  
<https://www.suffolk.police.uk/cp/crime-prevention/>

## CONTACT US

Need to contact police and it's not an emergency? Save time, do it online - [suffolk.police.uk/contact-us](https://suffolk.police.uk/contact-us)

You can call 101 to report a crime that has already happened, seek crime prevention advice or make us aware of any policing issues in your area.

You should always call 999 if:

- you or someone else is in immediate danger
- if the crime is in progress
- you need police help immediately

### Upcoming Events:

St Mary's, Walton Coffee Morning - every Monday 10am-12pm

Rosehill Library Surgery – 11am, 6 May  
Suffolk Show Emergency services joint displays - 28-29 May

## YOU SAID... WE DID

**You said:** There was an increase in ASB in Rendlesham.

**We did:** Additional patrols to the area and engagement with local partners.

**You said:** Concerns over ASB in Woodbridge.

**We did:** Additional patrol taskings, suspects identified and civil orders sought.

## LOCAL PRIORITIES

- 1 – The identification and disruption of county lines and local drug dealing
- 2 – The reduction of acquisitive crime offences such as burglaries, robbery and vehicle related theft.
- 3 – Working with partner agencies in the identification and reduction of ASB using a problem-solving approach.



think

# FRAUD



Fraudsters will sometimes pose as police officers to trick people into giving them personal information and defraud them of money.

Police officers **will never** ask you to

- supply bank details, passwords or PIN
- transfer funds to another account hand over cash or cards
- purchase high value goods to supply to them or a courier

If you do receive a call that you are unsure about, use another phone or wait at least 5 minutes to call police on 101 and check their identity. Genuine police officers will not mind waiting while you do this.

Please check elderly /vulnerable friends, family, neighbours are aware of this scam and how to avoid it.

