

# CONSTABLE'S COUNTY

An update on  
policing from  
the East, West  
and South of the  
county.

**FEB**  
**2025**



**SUFFOLK**  
**CONSTABULARY**



**Suffolk Police and  
Crime Commissioner**

*Making Suffolk a safer place to live, work, travel and invest*

# INTRODUCTION

First, I am pleased to confirm that Suffolk remains in the top three counties in England and Wales where people are least likely to be victims of crime, according to figures recently released by the Office of National Statistics. The total recorded crime covering the 12 months to the end of September 2024 show that there were 58.7 crimes per 1,000 people, a decrease of 5.1% compared to the previous 12 months. Nationally, there was a reduction in crime of 2.7% for England and Wales. The figures saw drops in a variety of crime types including knife crime (26.2%), robbery (17.6%), drug offences (-13.1%), public order, offences relating to violence, stalking and harassment, possession of weapons, criminal damage and vehicle crime, compared to the previous 12-month period. The latest figures show continued improvement. Just over four years ago Suffolk was in 13th position in terms of its crime levels. These figures do continue to demonstrate how we are working to keep the people of Suffolk safe and to solve crime and catch criminals. We have a hugely dedicated and committed workforce with our officers and staff, and we also need to acknowledge all the amazing support and assistance we receive from the public which is absolutely vital.

A long-term project to improve and transform the Constabulary's Contact and Control Room (CCR) is seeing significant improvements to help tackle demand. In the year ending 30 September 2024, 91% of emergency calls were answered within 10 seconds, with an average wait time of six seconds. By comparison, in the previous 12 months the figure was 79%. Meanwhile, also year ending September 2024, just 16% of 101 calls were abandoned as more members of the public opt for online services to contact police, with an average wait time of less than three minutes. This is down from 43% from the corresponding 12-month period. Over the past 18 months we have recruited additional call-takers, who are dual-trained to work in the dispatch teams that deploy officers to incidents, opened more online channels for people to report crime for non-emergency issues, and implemented the phasing in of the Right Care Right Person approach which I have previously written about. It has also progressed other initiatives to alleviate the pressures call takers face, whilst embracing digital technology to ensure members of the public who need the police can promptly, and

effectively, access help and support. A new service that uses digital technology to support victims of domestic abuse was introduced last spring. The Domestic Abuse Video Response Team which provides victims with the option of speaking with a police officer remotely, and promptly, via a video link to obtain details of the incident and initial evidence. This is now being further supported as we have launched a three-month trial using Enhanced Video Response with the aim of expanding video appointment capability outside that which is already offered. Elsewhere, a Digital Public Contact Engagement Desk was brought into the Contact & Control Room last year to make sure non-emergency online communications are handled better, faster and at a time to suit the public. We have made huge strides in the CCR to modernise the service and make it more responsive to the needs of the public, and in particular, to victims, witnesses and everyone who needs our support or help. This is an ongoing journey of transformation and I am grateful for the public's support as we continue to improve and provide a police service to be proud of.

I'd like to mention a couple of important visits we have had recently – earlier this month the Minister of State (Minister for Crime, Policing and Fire) Dame Diana Johnson visited Ipswich to build an understanding of retail and business-related crime in the county. Following an introduction from me and the Police & Crime Commissioner Tim Passmore, the Minister took part in a round table discussion with policing colleagues, Jack Abbott MP and leaders from the Business Improvement District and Ipswich Borough Council. The day culminated with visits to businesses in the town centre allowing the Minister to speak first-hand with those directly impacted by retail related crime. It isn't often that we get the opportunity to present the strength of our partnerships and community to senior Government officials, so I am pleased to have been able to collectively take part in this engagement. A couple of weeks later I had the pleasure of hosting representatives from the team that oversees the Police Race Action Plan nationally. The Police Race Action Plan was introduced to assist in building trust within our black communities whilst building a police service that is anti-racist. I am proud of the work we have done, and continue to do, to address racial disparities in policing



but acknowledge we are only at the start of a journey. We will need the energy, drive and commitment to listen, understand and develop responses and systems to better serve the needs of all of our communities. This was an opportunity to showcase the progress Suffolk continues to make with our own plan, but also identify areas for development through the sharing of ideas. The Race Action Plan focuses on four key areas; internal culture & inclusivity, use of police powers, community engagement, and not under-protected from victimisation. Each of these workstreams has an allocated local lead who separately had time with the national team to talk about their subject and learn of progress being made nationally. The Suffolk Ethnic Police Association led in-depth conversations with the team, whilst our very own Independent Scrutiny and Advisory Panel were also given the opportunity to present their findings after a solid first ten months of involvement. Initial feedback from the visit would suggest that we are on the right path, and I am confident that we have the right relationships with partners and communities for us to remain courageous in professionally developing our plan with compassion.

**Chief Constable  
Rachel Kearton**

At the end of last month, I think I was more relieved than pleased that the Suffolk Police and Crime Panel supported my proposal for the policing part of your council tax for next year. Only a single member voted against the 5.1% increase which means a Band D household will pay an extra £14 per year for policing in Suffolk.

I take absolutely no pleasure whatsoever in taxation increases especially as the United Kingdom tax burden is higher than at any time since the end of World War II and many households are really struggling financially.

The counter argument is simple and not intended to gloss over the unwelcome impact. Sadly - yet again and in spite of a change in government - the Home Office has stubbornly refused to commence implementing a more favourable funding settlement for our county whilst sitting on all the evidence required to change the status quo. Suffolk deserves better and I am sick and tired of the civil servants' collective obfuscation and mealy-mouthed excuses for inaction. I will continue to highlight this totally unsatisfactory state of affairs; I wouldn't mind so much if there was an explanation, but there isn't one.

That said we are fortunate that according to the latest set of crime data from the Office for National Statistics, Suffolk has the third lowest recorded crime rate of all force areas in England and Wales. That really is something to be pleased and grateful for and, bearing in mind the resources available, well done to all involved.

In the longer-term, keeping crime levels low benefits the whole of Suffolk and will help the economy to grow and increase prosperity. Equally I must emphasise the need for the constabulary to keep investing in new technologies and

techniques so that detection and solved rates improve.

A further detail to share with you is the shortfall of more than £200k for increased national insurance costs, the rise in the minimum wage (not that I am against it in principle) and no funding whatsoever for this year's pay awards in September – unless there is to be a public sector pay freeze of course? Neither has there been any allowance for increased Home Office licensing costs or any contribution at all towards kennelling costs for dangerous dogs (in Suffolk this comes to over £50k annually). The interminable delays within the criminal justice system are costing taxpayers many thousands of pounds per year from the policing budget, simply to keep victims, witnesses, and defendants in touch – where is the long-term plan for resolving this very unsatisfactory situation.

With your support, however, I do know our county will once again rise to whatever challenge we face, financially or otherwise, providing cause for optimism about the future.

**Police and Crime Commissioner  
Tim Passmore**



## OUR MISSION KEEPING SUFFOLK SAFE

We are courageous | professional | community | compassionate





**Inspector**  
**Liz Casey**

Inspector Liz Casey is responsible for the Community Policing Team (CPT) which covers Halesworth, Southwold, Debenham Eye, Framlingham Yoxford, Leiston Saxmundham and Aldeburgh.

## SOCIAL MEDIA

**Twitter -**  
**@HaleswrthPolice**

**Facebook -**  
**/HalesworthPolice**

## HALESWORTH

We have been tackling speeding in the Knodishall and Aldringham areas. Our officers carried out speed enforcement in both villages over the Christmas period as well as checking for drink and/or drug driving offences and gave road safety advice to motorists as well.



Although we highlight drink and drug driving at this time of year, it is of course something we enforce 24 hours a day, seven days a week. These results only strengthen the need for campaigns such as this as people continue choose to take such unnecessary risks whilst being fully aware of the dangers

We have also had reports of speeding in Ilketshall St Andrew and Peasenhall. Police Community Support Officer Christian Hassler has set up a new Community Speed Watch in Ilketshall St Andrew and, in attending to give support with the community, he has already noticed a reduction in speeding vehicles. A site survey has been set up for Peasenhall where there are plans for another Community Speed Watch set up to support the local residents.

Elsewhere, we have had reports of parking issues in Debenham. We've conducted partnership meetings which are ongoing with local businesses and the parish council that are affected by this. We have also engaged with Suffolk Highways and collectively we are working together to have this area redesigned to make it more user friendly for everyone and to reduce the amount of complaints received by members of the public and local businesses.

We also gave an input by the Casualty Reduction team to students at Halesworth College to educate young motorists on road safety.

Meanwhile, one of our local officers PC Andrew Phillips has been on foot patrol in Leiston, speaking with businesses, children and members of the public in and around the town. He also regularly patrols other villages either on foot or bicycle to be visible and available to people. We have been doing more advertised 'street meets' in the towns and villages, some of which we have delivered with our partners and this allows you, the public, to come and speak with us in a location, hopefully near to you for your convenience about your concerns and issues that you wish to raise.



We've also been delivering overnight patrols in your community and we continue to conduct public meetings to include engagements in Aldeburgh Library, Framlingham Library and Snape Village Hall. We've been at Framlingham Market, Harleston Road in Fressingfield outside the village hall, Chinnys Halesworth Wellbeing Café and Framlingham Library so far in early February. Other locations were Syleham village hall car park, Wilby village hall car park and Wetheringset village hall car park.

## CONTACT US

Need to contact police and it's not an emergency? Save time, do it online - [suffolk.police.uk/contact-us](https://suffolk.police.uk/contact-us)

You can call 101 to report a crime that has already happened, seek crime prevention advice or make us aware of any policing issues in your area.

You should always call 999 if:

- you or someone else is in immediate danger
- if the crime is in progress
- you need police help immediately

### Our future engagements:

- Thursday 20 February, Rumburgh village hall carpark - Parking Street meet Malt Office Lane, Rumburgh 1030:11:30hrs
- Wednesday 26 February Sweffling Coffee Morning in partnership with the Rural Coffee Caravan Village Hall 1000-1200hrs

## YOU SAID... WE DID

**You said** - Leiston Town Council reported a youth riding a moped across the recreation ground to the Leiston Skate Park on several occasions, over a couple of weeks, at a lunchtime which is causing anti-social behaviour.

**We did** - Police completed regular lunchtime high visibility foot patrols of the Leiston Skate Park and recreation ground in an effort to deal with the suspect and deter further incidents from occurring. Our patrols are still on-going.

**You said** - Concerns around criminality relating to drug dealing in your communities.

**We did** - We have acted on number of reports of suspected Class A drug activities in the Leiston area. The Community Policing Team completed targeted patrols of the area and detained a male for a section 23 drugs search. He was found in possession of a large quantity of cash, wraps of suspected cocaine and suspected crack cocaine and our investigations ongoing.

## LOCAL PRIORITIES

- Speed reduction and motoring offences within the community
- To provide a visible policing presence within our residential and business and communities
- Tackling anti-social behaviour and drugs within the community.





**Inspector**  
**Mark Jackson**

Inspector Mark Jackson is responsible for the Community Policing Team (CPT) which covers Beccles and Worlingham, Bungay and Wainford, Carlton Colville and Kessingland, Gunton, Oulton and Lothingland, Harbour, Kirkley, Normanston, Pakefield and Whitton and St. Margarets.

## SOCIAL MEDIA

**Twitter -**  
**@LowestoftPolice**

**Facebook -**  
**/LowestoftPolice**

## LOWESTOFT

With the lead up to Christmas, our Community Policing Teams were busy engaging with all aspects of our communities.

Officers were patrolling residential and business areas of the towns, both during the day and late in the evening. Checks were conducted with our late-night drinking venues to help minimise any late-night violence or disorder. Officers focused patrols within our busier pedestrianised areas, including our town centres and retail parks. Patrols also took place around some of our recreational grounds where anti-social behaviour can often occur.

It was important for our teams to be visible, to be approachable and to be on hand should anyone need us.



With Christmas behind us, the focus is now on the next few months. The team will continue to tackle the issue of retail crime within our busy town centres and retail parks. Officers will further support our local retailers and store workers to help reduce further offending.

The community team really wants to hear about the matters that concerns our communities. Currently the team are focused on recent reports of ASB in the Kirkley and Whitton areas, retail related crime, drug related issues and the impact this has on our communities. We are working with partner organisations to find solutions to our longer-

term community related problems.

The team are also committed to supporting our local schools and colleges, providing educational inputs to our students. Pictured below is Superintendent Chapman who recently attended Lowestoft Sixth Form College and spoke about leadership and gave some personal references to his own career.



Sgt Coote has recently organised a training evening with our local cadets which was supported by our colleagues within the Civil Nuclear Constabulary. Our cadets are a key member of our policing family and often take part in supporting our community events.



If you would like to be apply and become a cadet, please visit our website for more details or apply by sending us your details via [lowestoftcadets@suffolk.police.uk](mailto:lowestoftcadets@suffolk.police.uk)

Please take the time to visit our website for all the latest crime prevention advice to protect your home, vehicles, and belongings: <https://www.suffolk.police.uk/cp/crime-prevention/>

## CONTACT US

Need to contact police and it's not an emergency? Save time, do it online - [suffolk.police.uk/contact-us](https://suffolk.police.uk/contact-us)

You can call 101 to report a crime that has already happened, seek crime prevention advice or make us aware of any policing issues in your area.

You should always call 999 if:

- you or someone else is in immediate danger
- if the crime is in progress
- you need police help immediately

### Upcoming Engagements:

We regularly upload street meet dates onto our Facebook page.

- 15 February, 10-12pm, Lowestoft Library,
- 16 February, 10am-11am Westwood Avenue Shops,
- 16 February, 12pm-1pm, Pakefield Coop
- 22 February, 10am-11am, Tesco Beccles
- 22 February, 1pm-2pm, Bungay Community Library
- 25 February, 10am-11am, Marram Green, Kessingland
- 25 February, 6pm-7pm, One Stop, Hillside Avenue, Worlingham
- 26 February, 10am-12pm, Lowestoft Library
- 26 February, 10am-11am, Coop Ashburnham Way
- 26 February, 6-7pm, Coop Hillside Rd East

## YOU SAID... WE DID

**You said:** Concerns have been raised about the use of motorcycles in the Whitton ward.

**We did:** Patrols have been conducted in the areas where issues have been experienced. Residents have been spoken with and where police have witnessed an incident, or information has been provided, police have taken positive action.

**You said:** Various reports of criminal damage, anti-social behaviour, and general disorder within the town of Bungay.

**We did:** Police have worked with other organisations, taken positive action where necessary and helped to reduce calls for Police attendance.

**You said:** Concerns around retail theft within our local town centre stores and retail parks.

**We did:** Patrols have taken place in town centres, retail parks and local stores that have been targeted by crime previously. Various individuals have been arrested and charged.

## LOCAL PRIORITIES

- To tackle the issue of retail theft within our town centres and retail parks and to work with partner organisations to reduce the risk of re-offending. (This priority remains unchanged).
- To tackle the issue of anti-social behaviour (ASB) involving motorcycles within the Whitton ward.
- To tackle the issue of ASB and disorder within the area of Kirkley.





**Inspector**  
**Ben Hollands**

Inspector Ben Hollands is responsible for the Community Policing Team (CPT) which covers Great Cornard, Haverhill Rural and Suffolk South West, Haverhill Town, Sudbury Rural North, Sudbury Town, Waldingfield, Boxford and Bures.

## SOCIAL MEDIA

**Twitter -**  
[@PoliceHaverhill](#)

[@PoliceSudbury](#)

**Facebook -**  
[/SudburyHaverhillPolice](#)

## SUDBURY & HAVERHILL

Sudbury and Haverhill community policing officers have been proactive in the local villages responding to community intelligence such as stop searches in Acton and arrest of a male wanted on prison recall in Bildeston.



Sudbury and Haverhill officers have been busy executing Section 23 Misuse of drugs warrants across the two areas all with very positive results. This has resulted in persons being arrested and bailed for possession with intent to supply. Tackling drug production and distribution within our communities.

Local schools have been visiting Sudbury police station to learn about specific subjects such as online safety and grooming. These visits have included a police station tour

which always goes down well with the children asking lots of interesting questions.

Sudbury and Haverhill CPT are in the process of setting up a farm watch type scheme working with key individuals in the rural community who can assist in getting out quicker information to rural homes and businesses on crimes in progress, or that have happened overnight in their area.

A working schools' group is now well established with a selection of schools in the Sudbury area looking at preventative ways of targeting children prior to offending by sharing information and working in partnership.



Sudbury community officers were out over the Christmas period engaging with the public offering crime prevention advice and getting in the Christmas cheer.

Sudbury have set up councillor drop-in sessions, these are prior to the monthly town council meetings and enable a direct line of communications between councillors and the community police team to highlight any emerging issues in their areas. This is great example of how partnership working is evolving locally.

## CONTACT US

Need to contact police and it's not an emergency? Save time, do it online - [suffolk.police.uk/contact-us](https://suffolk.police.uk/contact-us)

You can call 101 to report a crime that has already happened, seek crime prevention advice or make us aware of any policing issues in your area.

You should always call 999 if:

- you or someone else is in immediate danger
- if the crime is in progress
- you need police help immediately

## YOU SAID... WE DID

**You said:** The anti-social use of vehicles in Sudbury  
**We did:** The Roads Policing team had a day of action in Sudbury targeting drivers and providing education. Local intelligence targeting hotspots areas. Working in partnership with local council to make public areas feel safer and reduce the opportunity for ASB.

**You said:** ASB within Sudbury town centre  
**We did:** Increase in officers on foot patrol in and around the town centre targeting hotspot area and key individuals. Intelligence building. Prosecution of offenders for criminal damage.

**You said:** ASB in a residential area of Haverhill  
**We did:** Increased the number of police patrols. Local ASB survey. Intelligence building. Worked in partnership with local council to get some graffiti from some removed from some garages and tidy the area up.

## LOCAL PRIORITIES

- Drug dealing and county lines
- Rural burglaries and inquisitive crime
- ASB within our town centres and residential areas





**Inspector**  
**Andrew Beeby**

Inspector Andrew Beeby is responsible for the Community Policing Team (CPT) which covers Bury St Edmunds, Bury Rural North and Bury Rural South.

## SOCIAL MEDIA

**Twitter -**  
**@BuryStEdsPolice**

**Facebook -**  
**/BuryStEdmundsPolice**

## BURY ST EDMUNDS

ASB Vehicle use has continued to be one of the priorities for the CPT team within Bury St Edmunds this month, especially those that drive dangerously and cause excessive noise.



This has been a persistent issue for the residents of the town centre who have to endure noise often during the evenings and night.



Much of the town centre is also a 20mph limit, with narrow streets within the medieval layout.

Officers have issued Traffic offence

Reports (TORS) and also issued fixed penalties in relation to breaches of the public spaces protection order.

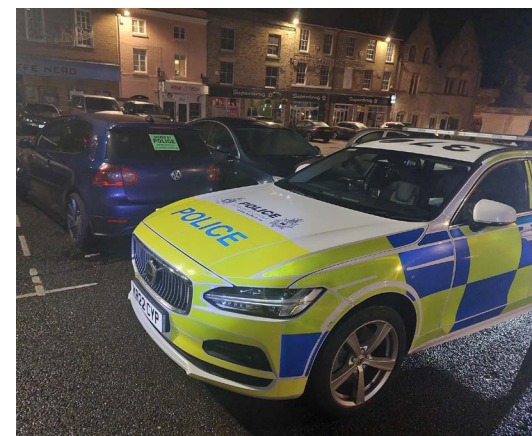


Events which the CPT have taken part in this month include:

15 January – Partnership housing event at West Suffolk Council.

19 January – Pop up at Great Barton, Freedom Church.

Our upcoming events will be advertised on our website as normal. There will be a Fraud Awareness event at Barclays bank in Cornhill, Bury St Edmunds, on 12 February.



## CONTACT US

Need to contact police and it's not an emergency? Save time, do it online - [suffolk.police.uk/contact-us](https://suffolk.police.uk/contact-us)

You can call 101 to report a crime that has already happened, seek crime prevention advice or make us aware of any policing issues in your area.

You should always call 999 if:

- you or someone else is in immediate danger
- if the crime is in progress
- you need police help immediately

## YOU SAID... WE DID

**You said** – ASB vehicle use in the town centre and Moreton Hall.

**We did** - Op Octane is an ongoing priority as detailed above.

**You Said** – Street drinking and Drunken ASB in the town centre was an issue.

**We Did** – the team have invested a massive amount of time and resource in this issue, working with partner agencies as well as applying for court orders and civil injunctions against those causing the most impact. This is ongoing work.

**You Said** – Retail crime was an issue.

**We Did** – applications for Criminal Behaviour Orders (CBOs) against the most prolific offenders, including one granted against Devin Paola, who also received a 26-week prison sentence.

## LOCAL PRIORITIES

- Dealing robustly with retail crime
- Deal with anti-social behaviour
- Drug Dealing and County Lines





**Inspector**  
**Tim Scott**

Inspector Tim Scott is responsible for the Community Policing Team (CPT) which covers Brandon, Lakenheath and the Rows, Manor and Red Lodge, Mildenhall and Newmarket.

## SOCIAL MEDIA

**Twitter -**  
**@ForestHthPolice**

**Facebook -**  
**/ForestHeathPolice**

## FOREST HEATH

It doesn't seem like five minutes since the last Constable's County but lots has been underway in Forest Heath since then.



Newmarket now has its own 'Crimestoppers Zone' thanks to Independent Charity Crimestoppers. The Community Policing Team have supported their campaign by putting up signage and delivering leaflets in the area in the hope that will increase our intelligence picture in the area.



PC Sampher conducted a pop-up engagement in Sainsbury's at Mildenhall and was on hand to offer crime prevention advice and give out SmartWater kits that can be used to make your property identifiable if it's stolen.

PCSO Powell, who is a very familiar face to the residents of Brandon, spent some time

at the 'friendly bench' to answer any queries the public had.

PC Tripp, PC Feeney and PC Kilbourn have been undertaking foot patrols in Mildenhall and Newmarket during their late shifts, focussing on some of the more secluded tracks. The main focus here was to engage with local youngsters and tackle any anti-social behaviour they may come across.

PCSO Rogers went along to the Sunset Care Barn in Lakenheath to learn more about the therapeutic activities they offer as a day care opportunity to those in need often as part of their care plans.



Engaging with our minority communities is a fundamental part of policing for many reasons. As part of our local engagement plan PCSO Butcher was welcomed to the Five Bells Mosque in Newmarket for Friday prayers. Thank you to the Mosque for inviting him in.

Following recent vehicle crime and business burglaries in Newmarket, officers have been visiting the affected areas to provide reassurance, discuss crime prevention and issue SmartWater kits. Unlocked vehicles are being targeted so the main message is to lock your cars.

Additional pulse patrols are being conducted in these areas to tackle the issue too.

Finally, our Forest Heath Police Cadets had a fun day out paintballing, and so we just had to share this photo of them ready for action.



## CONTACT US

Need to contact police and it's not an emergency? Save time, do it online - [suffolk.police.uk/contact-us](https://suffolk.police.uk/contact-us)

You can call 101 to report a crime that has already happened, seek crime prevention advice or make us aware of any policing issues in your area.

You should always call 999 if:

- you or someone else is in immediate danger
- if the crime is in progress
- you need police help immediately

### Upcoming engagements:

Every Tuesday 10am - 12pm Guineas Shopping Centre, Newmarket

10am 13 February – One Stop Multi-Agency Market Meet in Brandon

## YOU SAID... WE DID

**You said** – Concerns were raised in Mildenhall when residents woke to find nearly 30 vehicles were damaged overnight during a recent weekend.

**We did** – Officers deployed, conducted house-to-house enquiries, CCTV scoping and found blood belonging to the suspects. By lunchtime a suspect had been arrested.

**You said** – Concerns were raised in Brandon about anti-social behaviour from a premises due to suspected drug supply

**We did** – Our Kestrel and Scorpion pro-active teams executed a search warrant and arrested the occupant of the address for drugs supply. The suspect was subsequently charged with a drug related offence.

**You said** – A series of crimes were identified whereby expensive trailers were being stolen overnight in Forest Heath and other areas.

**We did** – Intelligence identified a premises in Essex where it was believed these stolen trailers were being sold on. Suffolk officers, supported by Essex Police, executed a search warrant at the location and recovered multiple trailers and other stolen property valued at hundreds of thousands of pounds. Two arrests were made and the investigation is ongoing.

## LOCAL PRIORITIES

### 1) Target those supplying drugs in our communities

We continue to use intelligence to develop opportunities for stop searches and search warrants. We have visited and supported those at risk of exploitation from drug dealers and worked with partners to train them in the signs of exploitation. Officers also conduct schools inputs to educate students on the risk of drugs and associated exploitation. A number of individuals have been arrested for drugs supply one of whom was recently given a three-and-a-half-year prison sentence.

### 2) Focus on reducing acquisitive theft offences such as burglaries, theft from motor vehicles and theft of motor vehicles by catching those responsible.

Officers regularly undertake pulse patrols during their late and night shifts in areas effected by recent crime. Officers have undertaken extra house-to-house around locations affected giving crime prevention advice and issuing SmartWater packs for their property to be marked. A targeted operation now in place to proactively respond to rural business crime.

### 3) Tackling & reducing incidents of anti-social behaviour

Officers identify the need to creation and develop problem solving plans where required. Additional patrols and pop-up engagements in areas affected by anti-social behaviour (ASB) have been completed. Identifying those at the highest risk from ASB and working with our partners from the Community Safety Partnership to problem solve these issues using a range of tools and powers available. Officers regularly liaise with and deliver inputs with local schools to help prevent students from becoming involved with ASB.





**Inspector**  
**John Murray**

Inspector John Murray is responsible for the Community Policing Team (CPT) which covers Stowmarket, Mid-Suffolk North/East and Mid-Suffolk South/West.

## SOCIAL MEDIA

**Twitter -**  
**@PoliceStow**

**Facebook -**  
**/StowmarketPolice**

## STOWMARKET

As we start the New Year of 2025, the Stowmarket Community Policing team have been busy continuing to support our partners including housing teams and Mid Suffolk District Council around problem addresses which have been causing significant anti-social behaviour (ASB) issues to those communities. This has included issuing banning notices to individuals causing reports of ASB in Stowmarket Library, as well as tackling reported ASB in the Rickinghall/Botesdale area of the locality by attending local meetings, proactive patrols and reassurance visits to vulnerable people.



We mentioned in the last article about a rise in commercial burglaries and as a result of the work we have carried out which has included several arrests (with assistance from CID and our response colleagues), targeted patrols at key times and locations and crime reduction advice, I am pleased to say that there has been a significant reduction of this crime type. Furthermore, the team are now visiting previous victims of burglaries and providing them with Smart Water packs for them to utilise.

The team have also been successful in the arrest, charge and remand of a male in Stowupland following reports of drug dealing in the area.

We have been dealing with several road related matters, including working with community speed watch teams in the vicinity of Wattisham airbase to improve road safety and awareness. We have also been carrying out patrols and liaising with

residents and highways in relation to drivers contravening no entry restrictions on Kiln Lane, Stowlangtoft.



A number of school visits have been carried out and educational inputs have been conducted around county lines and knife crime. We continue to engage with schools within the locality, attending and providing presentations to educate our youth on current topics that may impact on them. December is always a busy time of year, especially with Christmas parties and functions/events going on. Consequently, members of the community policing team have been engaging with licenced premises by conducting licensing visits over the festive period.

Cadets have been busy learning life savings skills by St John Ambulance, learning about child exploitation and gangs, enjoying some well-deserved rest watching Aladdin at the Theatre and attending their annual Christmas party.



Please see the Suffolk Police Website to keep up to date on our priorities and events in your area that we will be attending over the winter months - <https://www.suffolk.police.uk/>

## CONTACT US

Need to contact police and it's not an emergency? Save time, do it online - [suffolk.police.uk/contact-us](https://suffolk.police.uk/contact-us)

You can call 101 to report a crime that has already happened, seek crime prevention advice or make us aware of any policing issues in your area.

You should always call 999 if:

- you or someone else is in immediate danger
- if the crime is in progress
- you need police help immediately

## YOU SAID... WE DID

**You said:** residents raised concerns of increased ASB and drug activity at locations in Stowmarket and Elmswell

**We did:** increased patrols in the area (highlighted as a Pulse Patrol priority) leading to several arrests of offenders. Increased our visits to occupants vulnerable to exploitation and liaised with housing and council for joint work to reduce the issues

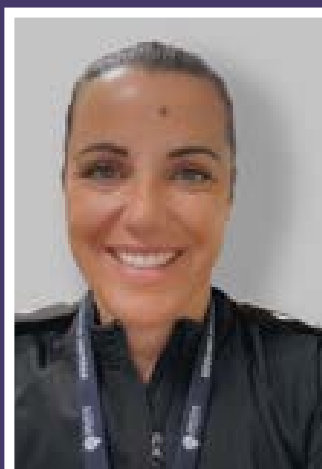
**You said:** continued concerns over large crowding and ASB at Needham Lake

**We did:** created a problem solving plan, set up a pop-up engagement event in the area to discuss concerns, continued to carry out regular patrols and worked with the council to come up with a longer term solution with new signage and the recruitment of three new rangers to patrol the area.

## LOCAL PRIORITIES

- Deal robustly with drug offences, particularly Class A drugs and the resulting crime and disorder through intelligence led enforcement, reassurance and support of vulnerable people.
- Tackling ASB at Stowmarket Recreation Ground and other identified areas, protecting vulnerable people and building trust and confidence in the community.
- Working with the council and other partners to reduce ASB issues in Needham Lake, Needham Market.
- Patrolling rural locations following recent burglaries to farms and outbuildings.





**Inspector**  
**Jess Lawlor**

Inspector Jess Lawlor is responsible for the Community Policing Team (CPT) which covers Alexandra and Westgate and St Margaret's.

## SOCIAL MEDIA

Twitter -  
@IpswichPolice

Facebook -  
/IpswichPolice

## IPSWICH CENTRAL

What a busy time it has been in Ipswich Central. Over the last two months we have completed 308 engagements in the community, made five arrests and conducted 276 pulse patrols.



Our PCs and PCSOs were visible in town leading up to and around the festive period, ensuring a stall was visible during the busy shopping times.



Operation Spotlight continues and has been effective with providing uninterrupted patrols in the town centre for the detection and prevention of anti-social behaviour (ASB). In December and January this has meant there have been an extra 430 hours of police patrol and visibility on top of daily business.

As a result of some intensive work with partner agencies, the Community Policing Team (PC Finch) have relocated and safeguarded a vulnerable disabled male whose address had been a focal point for ASB, criminality and cuckooing.

A known domestic abuse perpetrator who had cuckooed another address causing significant ASB for neighbours and local residents was removed from the address in partnership with housing association and a closure notice was issued to prevent his return. The occupant has been safeguarded through police and local authority support.

As part of our ongoing priority, CPT Officers have implemented preventative measures by use of Community Protection Notices (CPN) warning letters, and CPNs to deter street drinkers from frequenting the town, giving police powers to act should they return. So far in the last month, five have been issued after identifying our top 10 high-harm repeat offenders.

Our PCSOs come in early once a week to patrol with the Rough Sleeper Initiative to engage with the homeless community and ensure they are receiving support both socially and medically. This allows us to know who is sleeping rough in our area to identify ongoing vulnerabilities.



The CPT are working with licenced premises throughout the town, ensuring regular licencing visits are completed and that ongoing issues can be discussed with the premises themselves, working together to promote a safe, inclusive town centre.

Engagements have included attendance at Hackathon run by Future Female Society and Volunteering Matters. This focused on online safety delivered with PC Bloom and PCSO Pennock.

## CONTACT US

Need to contact police and it's not an emergency? Save time, do it online - [suffolk.police.uk/contact-us](https://suffolk.police.uk/contact-us)

You can call 101 to report a crime that has already happened, seek crime prevention advice or make us aware of any policing issues in your area.

You should always call 999 if:

- you or someone else is in immediate danger
- if the crime is in progress
- you need police help immediately

### Upcoming events:

- 21 February – 10.30am – 12pm, Christchurch Mews Coffee Morning
- 4 March – 10am-12pm, Westwood Court Coffee Morning
- 5 March – 10am – 12pm, Cobbold Mews Coffee Morning
- 15 March – 12pm – 3pm, ITFC Fan Zone Engagement Stand
- 25 March – 9am – 4pm, Suffolk New College – Meet the professionals Day (Suffolk Refugee Support)

## YOU SAID... WE DID

**You said:** Concerns raised regarding e-scooters and e-bikes being used in the town centre on roads and in pedestrian area.

**We did:** Looked at calls into police control or online reporting over last six months to identify demand/priority. Unfortunately, only four identified. Due to public concerns meetings are now being held with RAPT colleagues to work together should issue persist.

**You said:** Accessibility to police for those unable to attend engagements.

**We did:** Webinars are being organised for dates throughout the year whereby the community can speak with an Insp, Sgt and PC for the South Suffolk areas to answer questions, engage in discussions and listen to any issues being experienced.

## LOCAL PRIORITIES

**Target the most prolific offenders, including those committing ASB and theft from shop offences in the town centre, using preventative orders.**

By use of orders such as CPN/CBO, hot spot and targeted patrols, working with partners and local businesses to tackle offending.

**To ensure the safety of those using the town centre, including residents, shoppers and those using the night time economy.**

Increased visibility, relevant licensing checks and hot spot patrols. Work with our partners, local communities, business premises and design out crime officers.

**To work in partnership with other agencies to reduce ASB in identified residential properties relating to vulnerable persons.**

High visibility patrols and continued address visits. Work with our partners, local communities and design out crime officers.





**Inspector**  
**Naomi Lofthouse**

Inspector Naomi Lofthouse is responsible for the Community Policing Team (CPT) which covers Bridge, Gipping, Hadleigh and Nayland, Stoke Park and Sprites, Whitehouse, Whitton and Castle Hill and Claydon, Copdock and Peninsula.

## SOCIAL MEDIA

**Twitter -**  
**@IpswichPolice**

**Facebook -**  
**/IpswichPoliceUK**

## IPSWICH WEST

This month there has been an ongoing focus on rural burglaries, which consists of persons targeting the outbuildings of rural premises, of which there is a trend of various petrol tools and equipment being stolen

High visibility patrols are being carried out in our rural communities in an attempt to both deter any criminal activity as well as offering the rural community some reassurance. Crime prevention advice is being given out to those who have already been targeted as well as those who have been identified as being vulnerable to being targeted.

Our Sentinel team have been on dedicated overnight burglary patrols stopping a number of vehicles of interest, sending out a strong message to those who are thinking of visiting the county of Suffolk to commit acquisitive crime.

There has also been focus on the heft from motor vehicle offences being committed across areas including Chantry area, Castle Hill ward and Pinewood.

Ipswich Police Cadets helped support and conduct patrols in an evening around the recent vehicle break-ins, as well as creating a video around it for the Ipswich police Facebook page promoting crime prevention advice with the main message being one of ensuring your vehicle is locked after every use and valuables are removed. Over 90% of theft from motor vehicle offences are opportunities simply being successful with trying door handles which are left unlocked.

Several arrests have taken place of our identified prolific offenders. Three of which have now been served criminal behaviour orders allowing for further opportunity for enforcement against these repeat offenders 'Pop up' events have taken place across the area to raise awareness around recent vehicle thefts.

Christmas,, as always was a busy time for our festive engagements giving us further opportunity to reach out to our communities during this festive period.

We attended Hillside Primary and Westbourne Academy for their Christmas fairs. It's always and enjoyable and beneficial opportunity to

work with schools as this 'assists in building up positive relationships with our children and young persons.



Officers joined the Bramford Church congregation outside the Bramford Co-op for their Christmas Carol event. This also helped with the local issues on identifying and stopping vehicles parking in the local bus lane which was causing upset within the village. Officers attended St Mary & St Botolph Whitton Church to help at the 'Top up Shop' and assist with decorating the local Christmas tree and it always very satisfying to help out at these services, knowing what a valuable service they provide.



Officers have taken the opportunity to attend Unity Memory Café to engage with the locals in 'balloon tennis' and help advertise about the social group for people living with memory challenges and their family carers. We continue to build important relationships with the young people of our communities by attending schools, namely in this period Sprites Primary school, giving an input on online safety, as well as Stoke High for an input on knife crime and Gusford Primary around knife crime and County lines awareness.

## CONTACT US

Need to contact police and it's not an emergency? Save time, do it online - [suffolk.police.uk/contact-us](https://suffolk.police.uk/contact-us)

You can call 101 to report a crime that has already happened, seek crime prevention advice or make us aware of any policing issues in your area.

You should always call 999 if:

- you or someone else is in immediate danger
- if the crime is in progress
- you need police help immediately

### Upcoming events:

- Engagement – 6th March – St Thomas Church 1100-1200hrs
- Pop up event – 7th March – Stoke Library 1030-1200hrs

## YOU SAID... WE DID

**You said** - Issues around children hanging around Bridge Ward causing anti-social behaviour.

**We did** - During extra patrols children involved were identified and engaged with offering further education and awareness, and there is ongoing work with the council to come up with initiatives.

**You said** - Vehicle break ins around mainly Chantry area.

**We did** - Extra patrols were put on, as well as carrying out 'pop up' events. We also made use of online social media to post videos to raise awareness of vehicle security.

**You said** - Youth ASB around the Anglia Retail Park.

**We did** - We conducted patrols and engagement with retail premises and spoke to youths and parents suspected of being involved to raise awareness and deter from such behaviours.

**You said** - Issues around vehicles racing causing anti-social behaviour to local residents in the Copdock area.

**We did** - Further work with landowners has meant extra ANPR cameras have been installed, and work is planned for speedbumps to be re-designed to have enhanced traffic calming effect.

## LOCAL PRIORITIES

- Protection of persons vulnerable to exploitation/ victim of violent crime related behaviours - Working with partners, and making use of police powers to protect those identified as vulnerable/ victims to violence
- Rural burglaries to residential outbuildings – Working to identify and pursue offenders. Using visible and proactive policing amongst our rural communities to deter offences from taking place and offering crime prevention to vulnerable locations and premises
- Vehicle and street related ASB: We are working with partner agencies and making use of police powers in order to protect the community against the effects of anti-social behaviours both from vehicles and on the street.





**Inspector  
Ben Richards**

Inspector Ben Richards is responsible for the Community Policing Team (CPT) which covers Deben and Orford, Felixstowe, Gainsborough and Holywells, Kesgrave and Bixley, Martlesham and Orwell, Priory Heath, Rushmere and St. Johns and Woodbridge and Wickham Market.

## SOCIAL MEDIA

**Twitter -**  
@IpswichPolice

**Facebook -**  
/IpswichPolice

## IPSWICH EAST, WOODBRIDGE & FELIXSTOWE

Since the publishing of the last article the winter months have seen a slight decrease in demand across our sector. Our main focusses remain on the reduction of anti-social behaviour in public spaces and the progression of the Future Felixstowe Project which uses a Clear, Hold and Build methodology to decrease criminality and increase the service provision to support the most vulnerable parts of our community. The initiative is now reaching maturity in the Hold and Build phase and we now have three project groups working on incremental improvements in multiple areas. We have been working closely with our partners in East Suffolk Council to look at environmental improvements across the town of Felixstowe including a long overdue CCTV upgrade package which will see live CCTV feeds monitored by a central control room in a similar fashion to Lowestoft and other Eastern areas.



South Community Webinars – The Communities teams in the South are joining up to offer online webinars in early 2025. The details of each upcoming webinar will be published on the force and area social media channels and members of the public will be able to request a link to join the sessions via email to a centrally held inbox. The idea is to provide advice, updates and guidance from police regarding crime prevention, current observed crime trends and local problem-solving initiatives to those unable to attend the in-person police events and surgeries that are held in each ward each month. The sessions will not be used to take complaints. If successful these will be repeated every quarter.

The south-east CPT were instrumental in facilitating a large-scale protest by local farmers which took place along the A14 from Dock-spur roundabout. Sergeants Saunders

and Hussain both received thanks and praise from the organisers for their efforts.



The CPT also assisted with a Charity Christmas tractor run with over 120 farmers and festive tractors parading through the towns and villages in Rendlesham, Melton and Woodbridge area. Over £10,000 was raised for charities including East Anglian Air Ambulance, Suffolk Libraries, Eastern community Assistance Team and EA-CAT who assisted with Marshalling. PC Jackie Abbott has recently joined the team and will be covering the Melton and Orford wards. She has been busy meeting local residents including Chester the three-legged assistance dog and conducting public events in the Wickham market areas. More engagement events are planned below.

The Community Team have begun 2025 with a slightly revised team who are bursting with enthusiasm for the coming year and getting involved with local residents, schools and partner agencies.

We will be actively targeting acquisitive crime offenders and prioritising prevention advice to enable the public to protect themselves from crime of all types. See below link to the website which provide excellent guidance in this area.

<https://www.suffolk.police.uk/cp/crime-prevention/>

## CONTACT US

Need to contact police and it's not an emergency? Save time, do it online - [suffolk.police.uk/contact-us](https://suffolk.police.uk/contact-us)

You can call 101 to report a crime that has already happened, seek crime prevention advice or make us aware of any policing issues in your area.

You should always call 999 if:

- you or someone else is in immediate danger
- if the crime is in progress
- you need police help immediately

### Upcoming Events:

13 February, 10am, St Elizabeth Hospice Café, Heath Road, Monthly Pop Up

18 February Ladies Probus meeting St Audry's Park Golf course

25 February Kyson School Field to Fork Project

26 February, 8.30am, Eyke School meet and greet the parents and pupils.

20 March, 10am-12pm Taste Café Police surgery, Ipswich

Suffolk Show Emergency services joint displays 28-29 May

### Murrayside community centre Police Surgeries:

12 February, 2pm-4pm  
5 March 2025 2pm-4pm

### Rosehill Library Police Surgeries:

11 March 11am-1pm

### St Martin and St Mary's Church, Trimley St Mary

19 February, 10.30am-12pm  
12 March, 10.30am-12pm

## YOU SAID... WE DID

**You said:** Reports of anti-social driving around Queensway in the evenings.

**We did:** Additional patrols to the area, engagement with Local Ipswich Borough Council councillors and Suffolk County Council to reinstate bollards and signs in the area. This issue does still persist but significant progress has been made

**You said:** Concerns over criminal damage and ASB in the vicinity of Levington Marina

**We did:** Additional patrol taskings, suspects identified and multiple arrests have been made for the offences.

**You said:** Reports of speeding motorists on Acer Rd in Rendlesham

**We did:** Officers deployed to conduct additional speed checks but no offences were detected.

## LOCAL PRIORITIES

- 1 – The identification and disruption of county lines and local drug dealing
- 2 – The reduction of acquisitive crime offences such as burglary, robbery and vehicle related theft.
- 3 – Working with partner agencies in the identification and reduction of anti-social behaviour using a problem-solving approach.



think

# FRAUD



Fraudsters will sometimes pose as police officers to trick people into giving them personal information and defraud them of money.

Police officers **will never** ask you to

- supply bank details, passwords or PIN
- transfer funds to another account hand over cash or cards
- purchase high value goods to supply to them or a courier

If you do receive a call that you are unsure about, use another phone or wait at least 5 minutes to call police on 101 and check their identity. Genuine police officers will not mind waiting while you do this.

Please check elderly /vulnerable friends, family, neighbours are aware of this scam and how to avoid it.

